

**UNITEC JOB CONTRACT INFORMATION**

ALL of the items below MUST be provided by the Unitec customer to successfully provide the AAA26800ARE2-UNITEC i-Motion II replacement board.

**DOOR OPERATOR TYPE:**

Door Type	Description	Check One
co	Right Hand Center-Opening	
ssLeft	Single-Speed Left Hand	
ssRight	Single-Speed Right Hand	
2sLeft	Two-Speed Left Hand	
2sRight	Two-Speed Right Hand	
coHC	Right Hand Center-Opening, High Cab (new equipment only)	
Lco	Left Hand Center-Opening	
LcoHC	Left Hand Center-Opening, High Cab (new equipment only)	

**ENTRANCE WIDTH:**

Door Type	Door Width	Check One	Door Width	Check One	Door Width	Check One
Right Hand Center-Opening (co)	42		48			
Left Hand Center-Opening (Lco)	42		48			
Single-Speed Right Hand (ssRight)	32		36		42	
Single -Speed Left Hand (ssLeft)	32		36		42	
Two-Speed Right Hand (2sRight)	42		48		54	
Two-Speed Left Hand (2sLeft)	42		48		54	
Right Hand Center-Opening, High Cab (coHC)	42		48			
Left Hand Center-Opening, High Cab (LcoHC)	42		48			

If custom width is present, provide custom width: \_\_\_\_\_

**CAB HEIGHT:**

Cab Height	Check One
8 ft.	
9ft, 7in.	

**ENTRANCE HEIGHT:**

Cab Height	Check One
7 ft.	
8ft.	

**CAR DOOR FINISH:**

Car Door Finish	Description	Check One
PtndStl	Painted Steel	
Stnless	Stainless	
Bronze	Bronze	
Kick Pl	Painted Steel w/Kick Plate	

**HALL DOOR FINISH:**

Hall Door Finish	Description	Check One
PtndStl	Painted Steel	
Stnless	Stainless	
Bronze	Bronze	

**HEAVY DOOR FINISH:**

Hall Door Finish	Description	Check One
PtndStl	Painted Steel	
Stnless	Stainless	
Bronze	Bronze	

**DOL SENSOR (see Figure 1 on page 3):**

- ☐ YES  
☐ NO

**INTERFACE TYPE:**

Interface Type	Description	Check One
Multi-drop	Multidrop: Serial communication with car controller (e.g. E-411, 311, GEM, GCS)	
Discrete	Discrete: Discrete signals to/from car controller (e.g. Hydraulic systems, 211)	

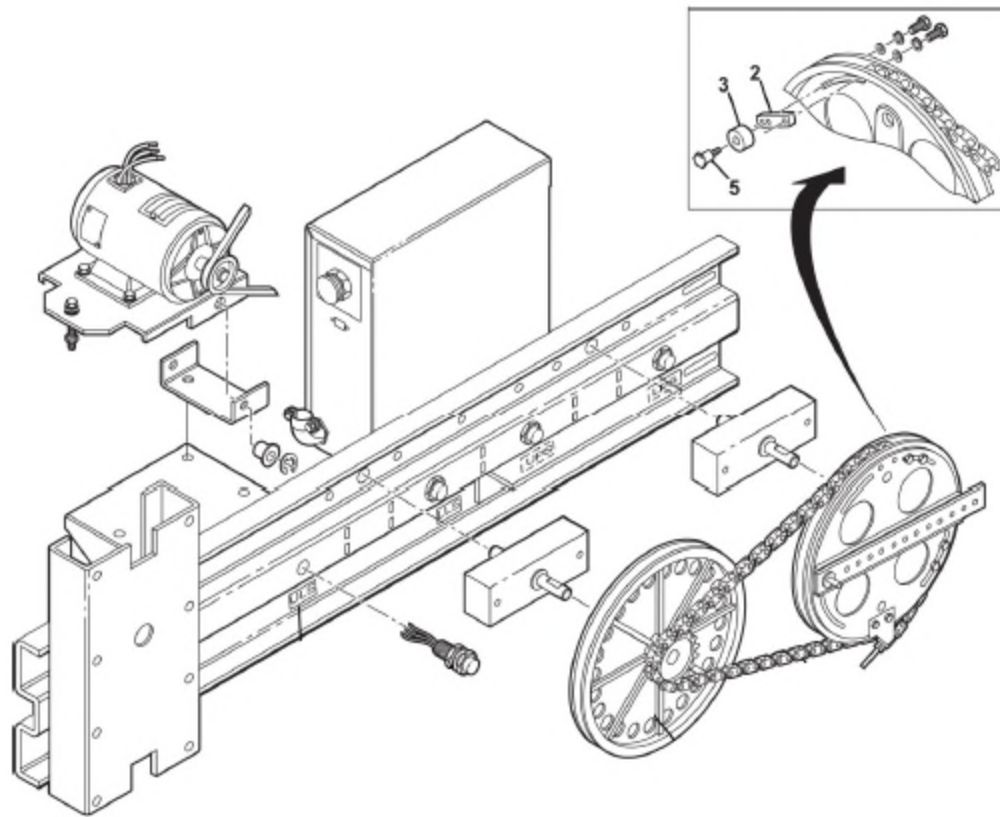
**Load Weighing Device Type (only applies for Multi-drop interface, leave blank if Discrete interface is selected):**

LdCell	Description	Check One
None	No load weighing	
1LdCell	One Load Cell	
2LdCell	Two Load Cells	
1OpTron	1 Optron Device	
2OpTron	2 Optron Devices	
LVDT	LVDT load weighing	

**SDC ORDER NUMBER TO BE FILLED OUT BY UNITEC:** \_\_\_\_\_

**CUSTOMER CONTACT INFORMATION:** \_\_\_\_\_

\_\_\_\_\_



Configuration	DCL Sensor Name	DOL Sensor Name
Center Opening	LLS	ULS
Single-Speed, Right Hand	ULS	LLS
2-Speed, Right Hand	ULS	LLS
Single-Speed, Left Hand	LLS	ULS
2-Speed, Left Hand	LLS	ULS

**Figure 1.** i-motion II DCL/DOL sensor name per door configuration.

## **DOOR OPERATOR LEARN RUN SEQUENCE USING THE 3-BUTTON INTERFACE**

The following sequence can be used to initiate a Learn Run using the 3-button interface in the absence of a display on the board.

1. Manually close the doors.
2. Use the following sequence with the 3-button interface to complete a Learn Run:
  - a. Press Down button once.
  - b. Press Enter button once.
  - c. Press Down button 7 times.
  - d. Press Enter button 3 times. The doors will move to the fully open position. Once they are fully open, the Up (open) and Down (close) buttons can be used to adjust the doors in the fully open position.
  - e. Press Enter. The doors will close.
  - f. Once the doors are closed completely, press Enter. Doors will open fully then and close fully.
  - g. Press Enter to save the Learn Run.
  - h. Wait for steady flashing of the red heart beat LED to complete the process.