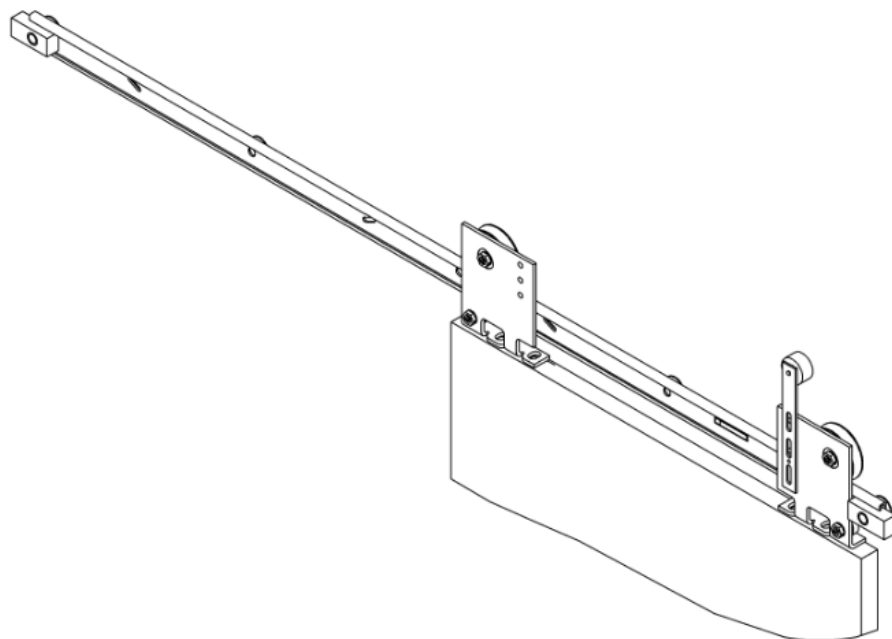


| A1 | SHEET SIZE 594 X 841 | 7 | 6 | 5 | 4 | 3 | 2 | 1 | | | |
|------------|-------------------------|----------------|------|------------------------------|----------------------|---------------------|----------|-------|------------------|----------------------------|--------------------------|
| DATE | PART | ENTRANCE WIDTH | TYPE | APPLICATION | HANGER FASTENER SIZE | L | A | B | D | E | F |
| 2002-03-20 | AAA24450Q1 | 36" | I | 2 HOLE DOOR | 1/2-13 UNC | 77.25 | 75.75 | 18.94 | 2.50 | AS SPECIFIED SEE NOTE 7 | 3.25 ±0.50 SEE NOTE 7 |
| | AAA24450Q2 | 42" | | | | 89.25 | 87.75 | 21.94 | | | |
| | AAA24450Q3 | 48" | | | | 101.25 | 99.75 | 24.94 | | | |
| | AAA24450Q4 | 36" | II | 4 HOLE DOOR OTIS STANDARD | | 77.25 | 75.75 | 18.94 | 4.63 | AS SPECIFIED SEE NOTE 8 | 1.50 ±0.50 SEE NOTE 8 |
| | AAA24450Q5 | 42" | | | | 89.25 | 87.75 | 21.94 | | | |
| | AAA24450Q6 | 48" | | | | 101.25 | 99.75 | 24.94 | | | |
| | AAA24450Q999 | VARIABLE | I | 2 HOLE DOOR | 1/2-13 UNC | (ENTWID X 2) + 5.25 | L - 1.50 | A/4 | 2.50 | AS SPECIFIED SEE NOTE 7 | 3.25 ±0.50 SEE NOTE 7 |
| | AAA24450Q998 | | II | 4 HOLE DOOR OTIS STANDARD | | | | | 4.63 | AS SPECIFIED SEE NOTE 8 | 1.50 ±0.50 SEE NOTE 8 |
| | AAA24450Q997 | | I | 4 HOLE DOOR | | | | | >=2.50 TO <=3.50 | AS SPECIFIED SEE NOTE 7 | 3.25 ±0.50 SEE NOTE 7 |
| | AAA24450Q996 | | II | | | | | | >3.50 TO <=4.75 | AS SPECIFIED SEE NOTE 8 | 1.50 ±0.50 SEE NOTE 8 |
| | AAA24450Q995 | | I | | | | | | >=2.50 TO <=3.50 | AS SPECIFIED SEE NOTE 7 | 3.25 ±0.50 SEE NOTE 7 |
| | AAA24450Q994 | | II | 4 HOLE DOOR GAL STANDARD | 3/8-16 UNC | | | | >3.50 TO <=4.75 | AS SPECIFIED SEE NOTE 8 | 1.50 ±0.50 SEE NOTE 8 |
| | AAA24450Q993 | | | | | | | | 4.13 | | |



NOTES:

- ENTWID = ENTRANCE WIDTH
- TRACK HEIGHT DIMENSION DOES NOT INCLUDE SHIM (REF 9) OR BAR (REF 5). FOR EXISTING HEADER CONDITIONS MOUNT AND LEVEL TRACK (REF 3) USING TWO SELF DRILLING SCREWS (REF 500). TRANSFER TRACK HOLE PATTERN USING TRANSFER PUNCH (REF 11). MOUNT TRACK (REF 3) USING SPECIFIED SPACERS (REF 7) AND TRACK BOLTS (REF 602).
- TO PLUMB DOORS & SET PROPER CLEARANCE (.25) AT SILL, ADJUST HANGER ROLLER ECCENTRICS.
- ADJUST UPTHRUST ROLLERS TO ALLOW .015 CLEARANCE BETWEEN ROLLERS AND BOTTOM OF TRACK.
- IF BUMPER ADJUSTMENT IS REQUIRED FOR EXACT DOOR TRAVEL, LOOSEN BOLT AND ROTATE BUMPER, CUT IF NECESSARY.
- VINTAGE TAG (REF 14) TO BE LOCATED APPROX. AS SHOWN.
- FOR APPLICATION OF TYPE I HANGER ARRANGEMENT:
DIM "D" = >=2.50 TO <=3.50
DIM "E" = FROM SURVEY MUST BE ENTWID-5.00 ±.50".
DIM "F" = FROM SURVEY MUST BE 3.25 ±.50.
- FOR APPLICATION OF TYPE II HANGER ARRANGEMENT:
DIM "D" = >=3.50 TO <=4.75
DIM "E" = FROM SURVEY MUST BE ENTWID-1.50 ±.50".
DIM "F" = FROM SURVEY MUST BE 1.50 ±.50.
- REFERENCE DRAWINGS:
A6940AT - FIXED VANE
C6940AP - INTERLOCK WITH SPIRATOR
AAA6940BS - EVACUATION DETERRENT DEVICE
AAA6940BW - COLLAPSIBLE DOOR RESTRICTOR
AAA6940BY - AUXILIARY DOOR STOP
AAA24479AAA - GIB AND RETAINER

THIS WORK AND THE INFORMATION IT CONTAINS ARE THE PROPERTY OF OTIS ELEVATOR COMPANY ("OTIS"). IT IS DELIVERED TO OTHERS ON THE EXPRESS CONDITION THAT IT WILL BE USED ONLY FOR, OR ON BEHALF OF, OTIS; THAT NEITHER IT NOR THE INFORMATION IT CONTAINS WILL BE REPRODUCED OR DISCLOSED, IN WHOLE OR IN PART, WITHOUT THE PRIOR WRITTEN CONSENT OF OTIS; AND THAT ON DEMAND IT AND ANY COPIES WILL BE PROMPTLY RETURNED TO OTIS.

UNPUBLISHED WORK © OTIS ELEVATOR COMPANY 2001
ALL RIGHTS RESERVED.

| REV DATE | 2002-03-20 | 2002-03-20 | 2002-03-20 | 2002-03-20 | 2002-03-20 |
|----------|------------|------------|------------|------------|------------|
| SHEET | 1 | 2 | 3 | 4 | 5 |

UNITEC PARTS COMPANY

AAA24450Q - UNITEC

S/S TRACK & HANGER (CAR) ARRANGEMENTS

S/S CAR DOORS FOR 36" TO 48" ENTRANCE WIDTHS

| A1 | | SHEET SIZE 504 X 841 | | 7 | 6 | 5 | 4 | 3 | 2 | 1 | | | | | | |
|------|-----------------------------------|--------------------------------|---|---------------------------|----|----|----|----|----|-----|-----|-----|-----|-----|-----|-----|
| ITEM | PART | DESCRIPTION | REMARKS/ CONDITIONS | QUANTITY PER ARRANGEMENT | | | | | | | | | | | | |
| | | | | 1 | 2 | 3 | 4 | 5 | 6 | 999 | 998 | 997 | 996 | 995 | 994 | 993 |
| 1 | AAA2451001 | DOOR HANGER(RIGHT) | TYPE I 1/2-13 UNC HANGER FASTENER | 1 | 1 | 1 | -- | -- | -- | 1 | -- | -- | -- | -- | -- | -- |
| | AAA2451003 | | TYPE II 1/2-13 UNC HANGER FASTENER | -- | -- | -- | 1 | 1 | 1 | -- | 1 | -- | -- | -- | -- | |
| | AAA2451005 | | TYPE II 3/8-16 UNC HANGER FASTENER | -- | -- | -- | -- | -- | -- | -- | -- | -- | -- | -- | 1 | |
| | AAA245100999 | | TYPE I 1/2-13 UNC HANGER FASTENER | -- | -- | -- | -- | -- | -- | -- | -- | 1 | -- | -- | -- | |
| | AAA245100997 | | TYPE II 1/2-13 UNC HANGER FASTENER | -- | -- | -- | -- | -- | -- | -- | -- | -- | 1 | -- | -- | |
| | AAA245100995 | | TYPE I 3/8-16 UNC HANGER FASTENER | -- | -- | -- | -- | -- | -- | -- | -- | -- | -- | 1 | -- | |
| | AAA245100993 | | TYPE II 3/8-16 UNC HANGER FASTENER | -- | -- | -- | -- | -- | -- | -- | -- | -- | -- | -- | 1 | |
| 2 | AAA2451002 | DOOR HANGER(LEFT) | TYPE I 1/2-13 UNC HANGER FASTENER | 1 | 1 | 1 | -- | -- | -- | 1 | -- | -- | -- | -- | -- | -- |
| | AAA2451004 | | TYPE II 1/2-13 UNC HANGER FASTENER | -- | -- | -- | 1 | 1 | 1 | -- | 1 | -- | -- | -- | -- | |
| | AAA2451006 | | TYPE II 3/8-16 UNC HANGER FASTENER | -- | -- | -- | -- | -- | -- | -- | -- | -- | -- | -- | 1 | |
| | AAA245100998 | | TYPE I 1/2-13 UNC HANGER FASTENER | -- | -- | -- | -- | -- | -- | -- | -- | 1 | -- | -- | -- | |
| | AAA245100996 | | TYPE II 1/2-13 UNC HANGER FASTENER | -- | -- | -- | -- | -- | -- | -- | -- | -- | 1 | -- | -- | |
| | AAA245100994 | | TYPE I 3/8-16 UNC HANGER FASTENER | -- | -- | -- | -- | -- | -- | -- | -- | -- | -- | 1 | -- | |
| | AAA245100992 | | TYPE II 3/8-16 UNC HANGER FASTENER | -- | -- | -- | -- | -- | -- | -- | -- | -- | -- | -- | 1 | |
| 3 | AAA483WV17 | TRACK | ENTRANCE WIDTH 36 | 1 | -- | -- | 1 | -- | -- | -- | -- | -- | -- | -- | -- | |
| | AAA483WV18 | | ENTRANCE WIDTH 42 | -- | 1 | -- | -- | 1 | -- | -- | -- | -- | -- | -- | | |
| | AAA483WV19 | | ENTRANCE WIDTH 48 | -- | -- | 1 | -- | -- | 1 | -- | -- | -- | -- | -- | | |
| | AAA483WV996 | | ENTRANCE WIDTH VAR. | -- | -- | -- | -- | -- | -- | 1 | 1 | 1 | 1 | 1 | 1 | |
| 4 | 320AB12 | BUMPER | 2 | | | | | | | | | | | | | |
| 5 | AAA299ANS999 | BAR | HANGER FASTENER 1/2-13 UNC, D=2.50 HANGER HOLE SPACING, TYPE I (SEE NOTE 7) | 1 | 1 | 1 | -- | -- | -- | 1 | -- | -- | -- | -- | -- | |
| 6 | 288RH24 | ARM ROLLER | (1) | | | | | | | | | | | | | |
| 7 | 127VB69 | SPACER | .06 THK | SEE TABLE AS SPECIFIED | | | | | | | | | | | | |
| | 462HA70 | | .25 THK | | | | | | | | | | | | | |
| | 462HA71 | | .31 THK | | | | | | | | | | | | | |
| | 462HA72 | | .44 THK | | | | | | | | | | | | | |
| | 462HA67 | | 1.00 THK | | | | | | | | | | | | | |
| | AAA462ME4 | | .56 THK | | | | | | | | | | | | | |
| | AAA462ME5 | | .68 THK | | | | | | | | | | | | | |
| 8 | AAA462ME6 | .81 THK | SEE TABLE AS SPECIFIED | | | | | | | | | | | | | |
| | AAA462ME7 | .94 THK | | | | | | | | | | | | | | |
| | AAA130BP1 | 3/8" | | | | | | | | | | | | | -- | -- |
| 9 | AAA130BP2 | 1/2" | 4 | 4 | 4 | 4 | 4 | 4 | 4 | 4 | 4 | 4 | -- | -- | -- | |
| | AAA255KK1 | HANGER FASTENER 1/2"-13 UNC | 16 | 16 | 16 | 16 | 16 | 16 | 16 | 16 | 16 | 16 | -- | -- | -- | |
| 10 | AAA255KK2 | HANGER FASTENER 3/8"-16 UNC | -- | -- | -- | -- | -- | -- | -- | -- | -- | -- | 16 | 16 | 16 | |
| | MT-105061-2 | TOOL 9/32" DIA TRANSFER PUNCH | 1 | | | | | | | | | | | | | |
| 11 | MT-105061-10 | TOOL 17/32" DIA TRANSFER PUNCH | 1 | | | | | | | | | | | | | |
| 12 | I.D. 23.3 | INSTALLATION MANUAL | 1 | | | | | | | | | | | | | |
| 13 | AAA244500 | DRAWING | 1 | | | | | | | | | | | | | |
| 14 | AAA102AJS29 | VINTAGE TAG | 1 | | | | | | | | | | | | | |
| 500 | 14 X 3/4 HEX HD SELF DRILL SCR ZP | "POSI-GRIP" OR EQUIV. | 4 | | | | | | | | | | | | | |
| 600 | 1/2-13 X 3/4 HEX HD BOLT ZP | | 2 | 2 | 2 | -- | -- | -- | 2 | -- | -- | -- | -- | -- | -- | |
| 601 | 1/2-13 X 1-1/2 HEX HD BOLT ZP | | 2 | 2 | 2 | 4 | 4 | 4 | 2 | 4 | 4 | 4 | -- | -- | -- | |
| | 3/8-16 X 1 1/2 HEX HD BOLT ZP | | -- | -- | -- | -- | -- | -- | -- | -- | -- | -- | 4 | 4 | 4 | |
| 602 | 1/2-13 X 1 HEX HD BOLT ZP | | SEE TABLE AS SPECIFIED | | | | | | | | | | | | | |
| | 1/2-13 X 1-1/4 HEX HD BOLT ZP | | | | | | | | | | | | | | | |
| | 1/2-13 X 1-1/2 HEX HD BOLT ZP | | | | | | | | | | | | | | | |
| | 1/2-13 X 1-3/4 HEX HD BOLT ZP | | | | | | | | | | | | | | | |
| | 1/2-13 X 2 HEX HD BOLT ZP | | | | | | | | | | | | | | | |
| | 1/2-13 X 2-1/4 HEX HD BOLT ZP | | | | | | | | | | | | | | | |
| | 1/2-13 X 2-1/2 HEX HD BOLT ZP | | | | | | | | | | | | | | | |
| 700 | 1/2-13 X 2-3/4 HEX HD BOLT ZP | | 5 | | | | | | | | | | | | | |
| | 1/2-13 X 3 HEX HD BOLT ZP | | | | | | | | | | | | | | | |
| 800 | 1/2-13 HEX JAM NUT ZP | | 5 | | | | | | | | | | | | | |
| 800 | 1/2 INT TEETH LK WSR ZP | | 5 | | | | | | | | | | | | | |

THIS WORK AND THE INFORMATION IT CONTAINS ARE THE PROPERTY OF OTIS ELEVATOR COMPANY ("OTIS"). IT IS DELIVERED TO OTHERS ON THE EXPRESS CONDITION THAT IT WILL BE USED ONLY FOR, OR ON BEHALF OF, OTIS; THAT NEITHER IT NOR THE INFORMATION IT CONTAINS WILL BE REPRODUCED OR DISCLOSED, IN WHOLE OR IN PART, WITHOUT THE PRIOR WRITTEN CONSENT OF OTIS; AND THAT ON DEMAND IT AND ANY COPIES WILL BE PROMPTLY RETURNED TO OTIS.

UNPUBLISHED WORK © OTIS ELEVATOR COMPANY 2001
ALL RIGHTS RESERVED.

UNITEC PARTS COMPANY

AAA24450Q - UNITEC

S/S TRACK & HANGER (CAR) ARRANGEMENTS

S/S CAR DOORS FOR 36" TO 48" ENTRANCE WIDTHS

THIS WORK AND THE INFORMATION IT CONTAINS ARE THE PROPERTY OF OTIS ELEVATOR COMPANY ("OTIS"). IT IS DELIVERED TO OTHERS ON THE EXPRESS CONDITION THAT IT WILL BE USED ONLY FOR, OR ON BEHALF OF, OTIS; THAT NEITHER IT NOR THE INFORMATION IT CONTAINS WILL BE REPRODUCED OR DISCLOSED, IN WHOLE OR IN PART, WITHOUT THE PRIOR WRITTEN CONSENT OF OTIS; AND THAT ON DEMAND IT AND ANY COPIES WILL BE PROMPTLY RETURNED TO OTIS.

UNPUBLISHED WORK © OTIS ELEVATOR COMPANY 2001
ALL RIGHTS RESERVED.

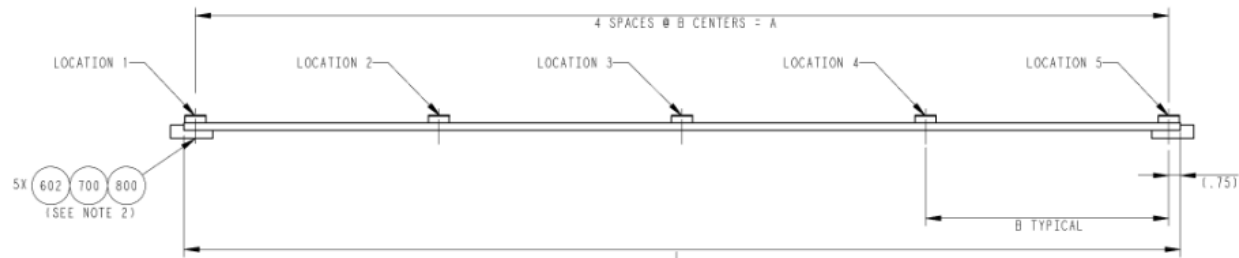
UNITEC PARTS COMPANY

AAA24450Q - UNITEC

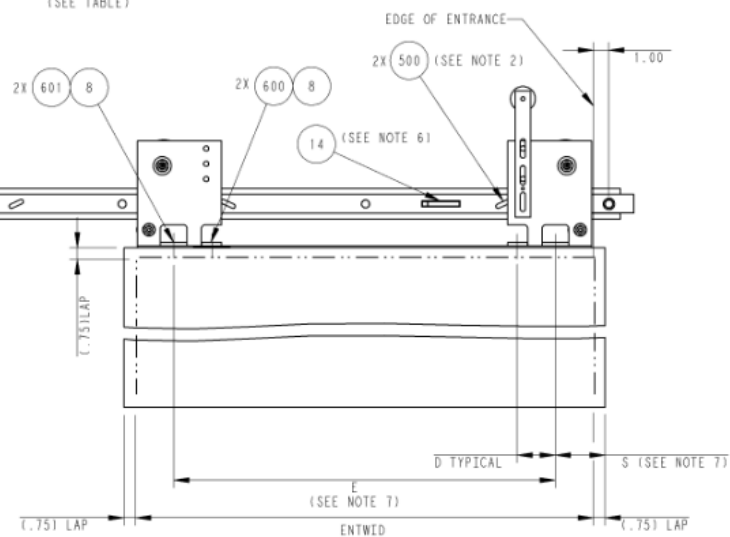
S/S TRACK & HANGER (CAR) ARRANGEMENTS

S/S CAR DOORS FOR 36" TO 48" ENTRANCE WIDTHS

| A1 | SHEET SIZE 304 X 841 | 7 | 6 | 5 | 4 | 3 | 2 | 1 |
|--|------------------------------|---------------------------|---------------------------|---|---|---|---|---|
| SPACER (REF 7) & TRACK BOLTS (REF 602) | | | | | | | | |
| H | SPACERS AT EACH LOC. | BOLT LENGTH AT LOC. 1 & 5 | BOLT LENGTH AT LOC. 2 - 4 | | | | | |
| .25 | (1) 462HA70 (1) 12TVB69 | 2.00 | 1.00 | | | | | |
| .375 | (1) 462HA71 (2) 12TVB69 | 2.25 | 1.25 | | | | | |
| .50 | (1) 462HA72 (2) 12TVB69 | | | | | | | |
| .625 | (1) AAA462ME4 (2) 12TVB69 | 2.50 | 1.50 | | | | | |
| .75 | (1) AAA462ME5 (2) 12TVB69 | | | | | | | |
| .875 | (1) AAA462ME6 (2) 12TVB69 | 2.75 | 1.75 | | | | | |
| 1.00 | (1) AAA462ME7 (2) 12TVB69 | | | | | | | |
| 1.125 | (1) 462HA67 (4) 12TVB69 | 3.00 | 2.00 | | | | | |
| 1.25 | | | | | | | | |



TRACK PLAN VIEW
SPACER AND TRACK BOLTS
(SEE TABLE)



TYPE I HANGER ARRANGEMENT
RIGHT HAND AS SHOWN
LEFT HAND OPPOSITE
SHOWN WITH OPTIONAL ADAPTER BAR

THIS WORK AND THE INFORMATION IT CONTAINS ARE THE PROPERTY OF OTIS ELEVATOR COMPANY ("OTIS"). IT IS DELIVERED TO OTHERS ON THE EXPRESS CONDITION THAT IT WILL BE USED ONLY FOR, OR ON BEHALF OF, OTIS; THAT NEITHER IT NOR THE INFORMATION IT CONTAINS WILL BE REPRODUCED OR DISCLOSED, IN WHOLE OR IN PART, WITHOUT THE PRIOR WRITTEN CONSENT OF OTIS; AND THAT ON DEMAND IT AND ANY COPIES WILL BE PROMPTLY RETURNED TO OTIS.
UNPUBLISHED WORK © OTIS ELEVATOR COMPANY 2001
ALL RIGHTS RESERVED.

UNITEC PARTS COMPANY

AAA24450Q - UNITEC

S/S TRACK & HANGER (CAR) ARRANGEMENTS

S/S CAR DOORS FOR 36" TO 48" ENTRANCE WIDTHS

A1 SHEET SIZE
364 X 841

7

6

5

4

3

2

1

SPACER (REF 7) & TRACK BOLTS (REF 602)

| H | SPACERS AT EACH LOC. | BOLT LENGTH AT LOC. 1 & 5 | BOLT LENGTH AT LOC. 2 - 4 |
|-------|----------------------------|---------------------------|---------------------------|
| .25 | (1)462HA70 (1)127VB69 | 2.00 | 1.00 |
| .375 | (1)462HA71 (2)127VB69 | 2.25 | 1.25 |
| .50 | (1)462HA72 (2)127VB69 | | |
| .625 | (1)AAA462WE4 (2)127VB69 | 2.50 | 1.50 |
| .75 | (1)AAA462WE5 (2)127VB69 | | |
| .875 | (1)AAA462WE6 (2)127VB69 | 2.75 | 1.75 |
| 1.00 | (1)AAA462WE7 (2)127VB69 | | |
| 1.125 | (1)462HA67 | 3.00 | 2.00 |
| 1.25 | (1)127VB69 | | |

5X (602 700 800)
(SEE NOTE 2)

LOCATION 1

LOCATION 2

LOCATION 3

LOCATION 4

LOCATION 5

4 SPACES @ B CENTERS = A

B TYPICAL

(.75)

TRACK PLAN VIEW
SPACER AND TRACK BOLTS
(SEE TABLE)

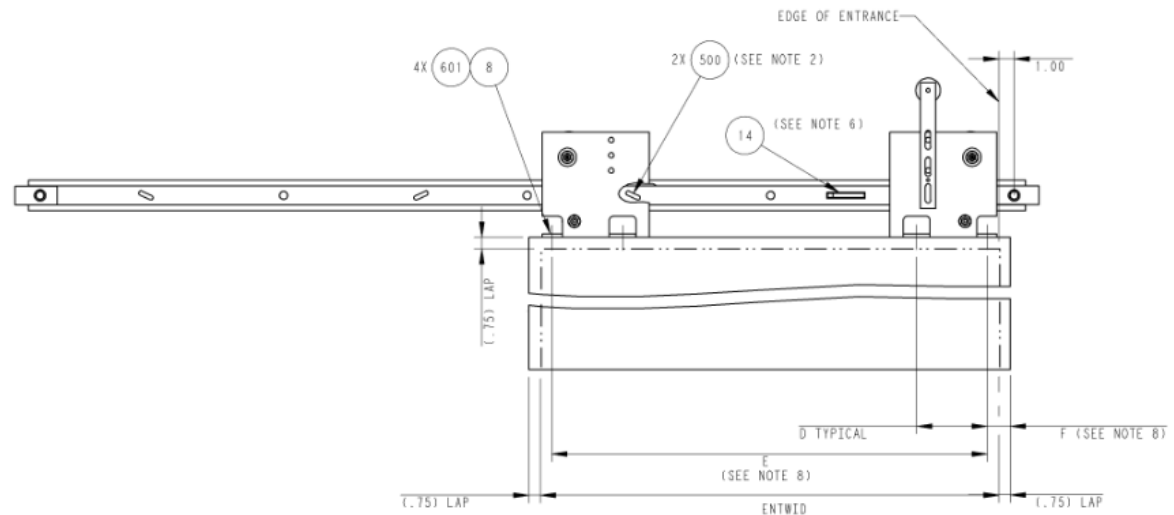
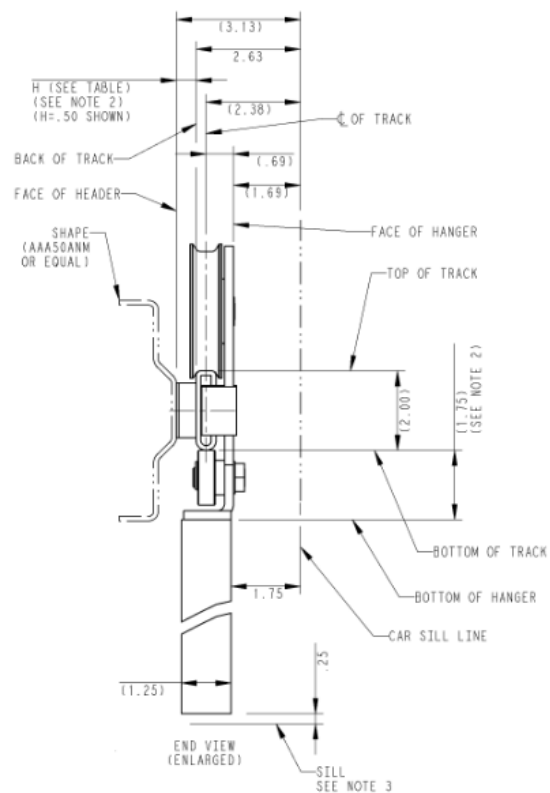
DWG

AAA24450Q

C

B

A

FED
RTYPE II HANGER ARRANGEMENT
RIGHT HAND AS SHOWN
LEFT HAND OPPOSITE

THIS WORK AND THE INFORMATION IT CONTAINS ARE THE PROPERTY OF OTIS ELEVATOR COMPANY ("OTIS"). IT IS DELIVERED TO OTHERS ON THE EXPRESS CONDITION THAT IT WILL BE USED ONLY FOR, OR ON BEHALF OF, OTIS; THAT NEITHER IT NOR THE INFORMATION IT CONTAINS WILL BE REPRODUCED OR DISCLOSED, IN WHOLE OR IN PART, WITHOUT THE PRIOR WRITTEN CONSENT OF OTIS; AND THAT ON DEMAND IT AND ANY COPIES WILL BE PROMPTLY RETURNED TO OTIS.

UNPUBLISHED WORK © OTIS ELEVATOR COMPANY 2001
ALL RIGHTS RESERVED.

UNITEC PARTS COMPANY

AAA24450Q - UNITEC

S/S TRACK & HANGER (CAR) ARRANGEMENTS

S/S CAR DOORS FOR 36" TO 48" ENTRANCE WIDTHS

E

D

C

B

A

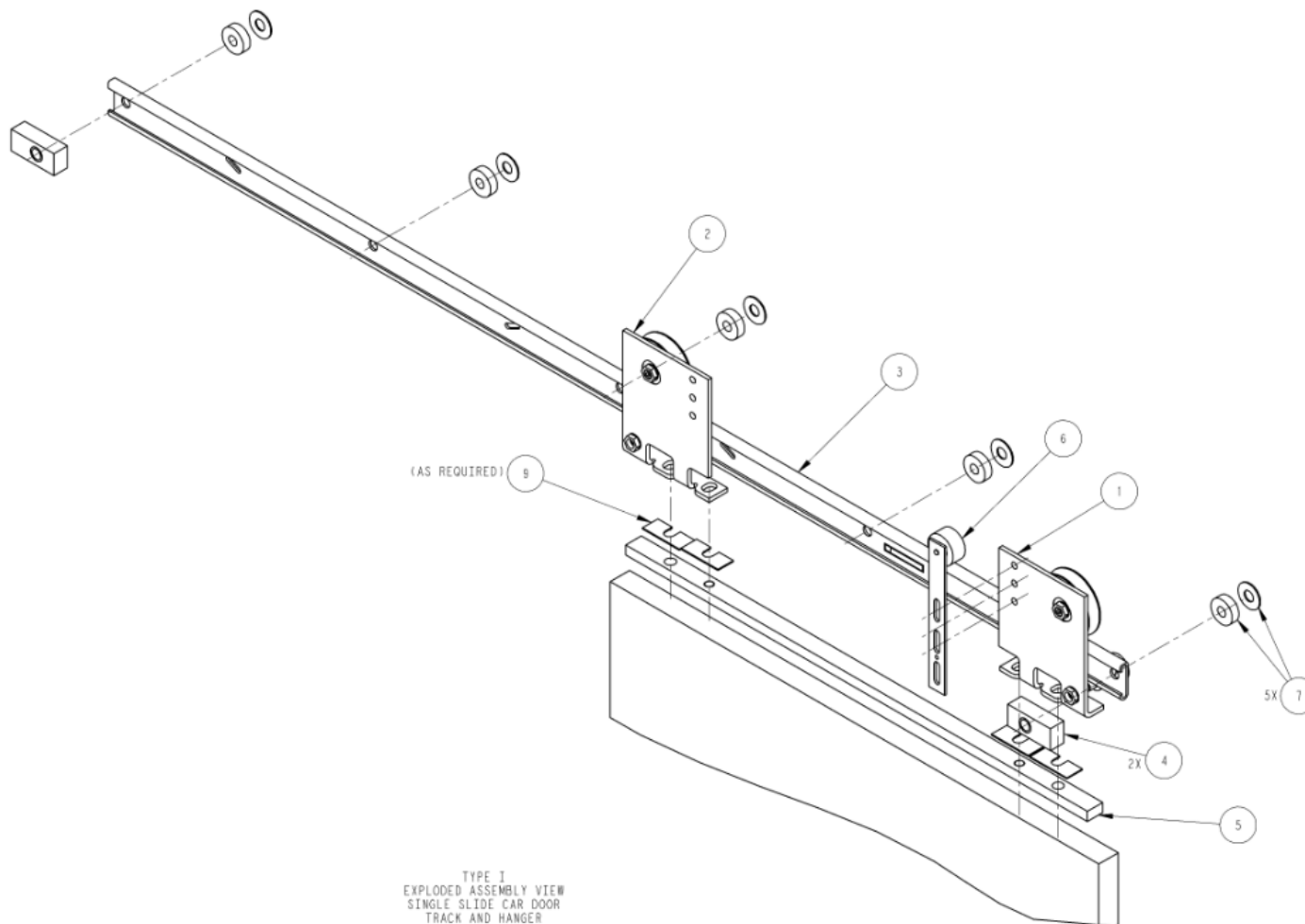
E

D

C

B

A

DWG
AAA24450QTED
ER

TYPE I
EXPLODED ASSEMBLY VIEW
SINGLE SLIDE CAR DOOR
TRACK AND HANGER
SHOWN WITH OPTIONAL
ADAPTER BAR

THIS WORK AND THE INFORMATION IT CONTAINS ARE THE PROPERTY OF OTIS ELEVATOR COMPANY ("OTIS"). IT IS DELIVERED TO OTHERS ON THE EXPRESS CONDITION THAT IT WILL BE USED ONLY FOR, OR ON BEHALF OF, OTIS; THAT NEITHER IT NOR THE INFORMATION IT CONTAINS WILL BE REPRODUCED OR DISCLOSED, IN WHOLE OR IN PART, WITHOUT THE PRIOR WRITTEN CONSENT OF OTIS; AND THAT ON DEMAND IT AND ANY COPIES WILL BE PROMPTLY RETURNED TO OTIS.

UNPUBLISHED WORK © OTIS ELEVATOR COMPANY 2001
ALL RIGHTS RESERVED.

UNITEC PARTS COMPANY

AAA24450Q - UNITEC

S/S TRACK & HANGER (CAR) ARRANGEMENTS

S/S CAR DOORS FOR 36" TO 48" ENTRANCE WIDTHS