

**Subject:** Otis Type B Door Hangers—Transition to Upgrade-Only Support

**Vintage:** 1933–1980s

**Document References:** Otis internal documents: SPL C-1012

UNITEC documents: UT-ID 23.6-500, UT-ID 23.2-6

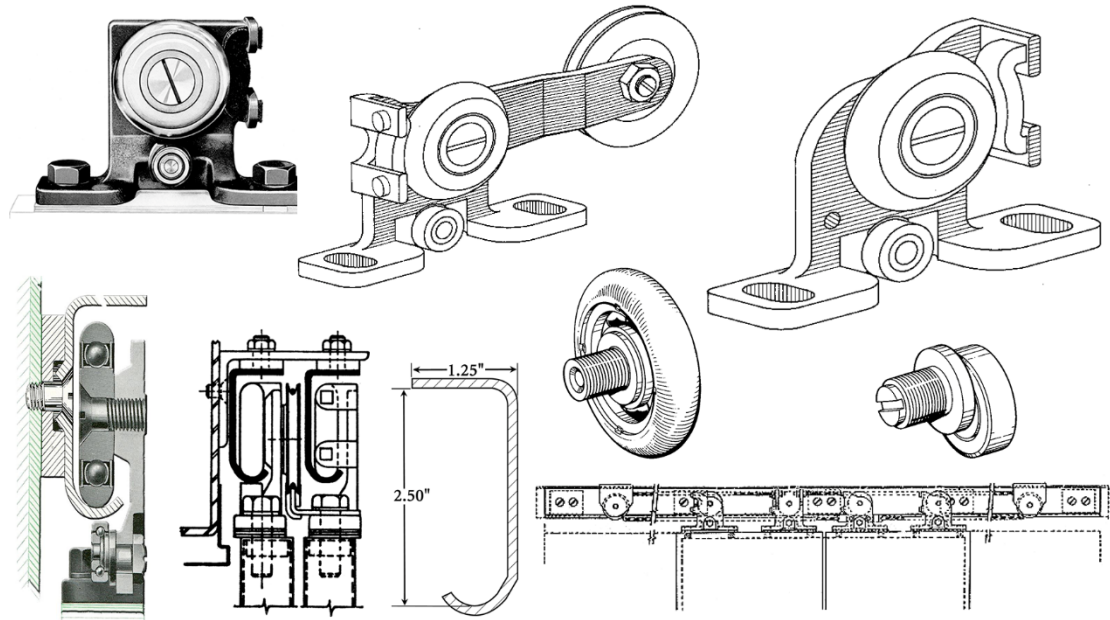
**Overview:** UNITEC Parts Company has transitioned to Upgrade-Only Support for Otis type B door hangers. The individual spherical steel rollers (p/n 456EP2) will be available for the time being through UNITEC.

Consider this Upgrade-Only Support option during service, repair, or Modernization when:

- An entire J-shape track (p/n 483A1) or a door hanger needs replacement due to cracking.
- There has been a crash at a landing carrying this type B design.
- A door panel at a landing needs replacing.
- A Mod is pending to an elevator containing these original Otis steel-on-steel door systems.

A new Otis / UNITEC Track and Hanger set is now the only proper replacement option.

**Description:**



Original Type B Door Hanger and J-Shape Track  
(note steel spherical roller)

Example Type B C/O Track and Hanger Setup  
(could be early chain drive or aircord drive)

Since design inception, the J-shape steel tracks did not have urethane caps, nor were there service version urethane rollers available to prevent the steel-on-steel contact for quieter operation. In fact, the old track and hanger sets have been running steel-on-steel since the 1930s. Replacing a track correctly is labor intensive, since face mounting of these tracks can be done only if the thick sheet metal is form countersunk to accept flat head screws. Waiting for contract specific track lengths and drilling pattern surveys is no longer practical, nor cost effective.

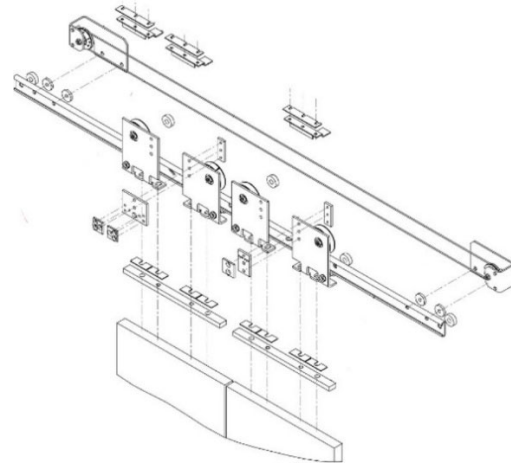
## Service Upgrade Solution

Diminishing populations of Otis type B hanger systems, lower service part quantities, increased cost, higher demand for Modernizing entire hall entrances, and the availability of robust Otis/UNITEC hall track and hanger systems drive the transition to this Upgrade-Only Support option for UNITEC Parts Company customers. Contact UNITEC for a quote on new track and hanger sets and other options (see below). Provide your door system opening:

Type \_\_\_\_\_ Size (entrance W x H) \_\_\_\_\_ Hand \_\_\_\_\_ Hall or Car Side? \_\_\_\_\_  
 Otis Sales Number(s) \_\_\_\_\_ Qty. of Cars & Entrances for Upgrade \_\_\_\_\_

In 2020 UNITEC Parts Company began quoting standard track and hanger sets, as the service upgrade solution for type B hanger systems, using pre-engineered robust Otis design track and hanger sets containing:

- New 2 in. tall flat top tracks suited for typical, quiet Otis poly tired hanger rollers.
- New door hangers (two per panel) offering the same door top bolt spacing hangers to match the existing type B hanger 4 in. pattern. If new door panels are applied, 4-5/8 in. standard bolt spacing hangers would be the standard go-to hangers.
- New associated fastenings: C/O aircord drive relating components, or sill mounted relater/closer for 2-speed door setups.



**Example:** Contemporary track and hanger setup for C/O.  
 (door top adapting bars for reference only / not included)

### Suggested Actions:

- Review UNITEC UT-ID 23.6-500 for 6940 door lock space constraints, as those constraints for header pocket height and running clearance will hold for these new Mod track and hanger sets.
- Measure the maximum allowable horizontal space available on site at each landing for mounting a new track section and compare to the new track length provided as part of the new Mod track and hanger sets.

**Estimated Installation Time:** Varies. (If fit/space requirements are met, 1/2 day per landing, per team assuming original door retention.)

- Options:**
- Consider new pre-punched hall trackless header, designed to mate with the new UNITEC Mod type track and hanger sets with no drilling.
  - Replace your door locks if all original equipment is still in place and add a shortened door zone car unlocking cam.
  - Install a folding door restrictor.
  - If hall doors are being retained, add door bottom retainers to the existing door panels.
  - Offer a new door operator upgrade.

We at **UNITEC Parts Co.** appreciate your business. For questions, please call us at **(800) 328-7840**.