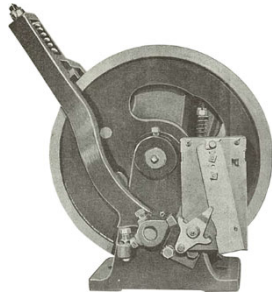


Subject: Otis Type R Governors—Transition to Upgrade-Only Support

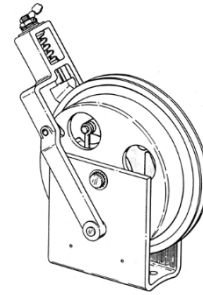
Vintage: 1920–1990s

Document References: Otis internal documents: SPLs C-254L and C-254M; TIP 9.0-4

Overview: UNITEC Parts Company has transitioned Otis Type R Governors to **Upgrade-Only Support**. Complete assemblies of Type R Governors will no longer be produced. Only select spare parts will be available through UNITEC Parts Company.



Earliest Cast Iron Base R Governor

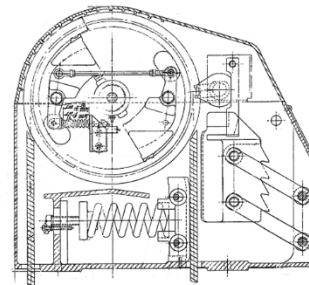
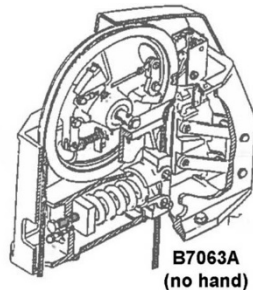


Later Vintage R Governor Formed Base

Consider the **Upgrade-Only Support** option when:

- Modernization work should meet the latest ANSI Code requirements, including up and down overspeed trip protection.
- The existing R governor is noisy or has the original cast iron stand, indicating old vintage no longer cost effective for repair.
- The rope groove in the sheave is worn or has rope impressions, there are filings on the floor or the governor rope needs replacement. A new governor rope installed on an old R governor sheave will accelerate the wear on an older iron sheave.
- A pull through force of ~300 lb. is not achievable on the existing governor.

A new Otis / UNITEC type B7063A governor is the proper replacement option.



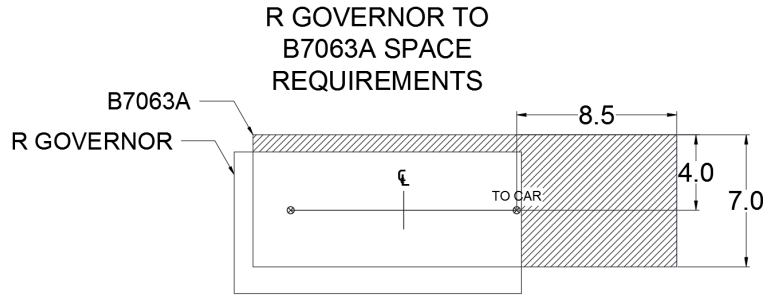
Description: Since the 1920s, Otis R Governors have been used in various Otis applications for instantaneous (roll type) safeties with pull through force requirement of 200–300 lb., and cars running at ~200 fpm or slower.

Designed since 1965, Otis B7063A governors operate in the same speed and force range. This cast aluminum cased centrifugal governor will trip an overspeed switch with elevator traveling in either the up or down directions. Safety set action and pull through force is applied only with the elevator running down. This governor can be used for either car or

counterweight. Adjust trip speeds **only if absolutely required**, by increasing or reducing the length of the compression spring connected to the flyweight.

Basic Specifications: 12 in. diameter sheave, 3/8 in. steel wire rope application, 275–300 lb. pull through force setting, overspeed switch tripping feature prior to jaw set, and adjustable springs for both the speed and the pull through force settings.

The B7063A will occupy a larger floor footprint space. Prior to purchasing this replacement, check for space requirements.



Service Upgrade Solutions

- UNITEC will specify new B7063A_ based on the existing contract speed. Review the trip speed.

Governor Part numbers

Part Number	Description	Contract Speed (FPM)	Used for	Pull Through Force
B7063A22	B7063A Governor	125 or under	Car	299 lb.
B7063A24	B7063A Governor	150		
B7063A26	B7063A Governor	200		

- For car applications running at 125 fpm or under, trip speed will be set at 175 fpm. For applications above 125 fpm, the B7063A_ will be factory preset for trip speed at 40% above the contract speed.
- Warranty of the governor will depend on installing a new 3/8 in. non-preformed governor rope (p/n AAA712Q112C).

Suggested Actions:

- Survey machine room space constraints surrounding the existing governor. Footprint of the new B7063A is larger than the original R governor (see footprint above).
- Examine the condition of Safety Releasing Carrier on car top as well as rope connections. If governor rope shackles are babbited, replace with wedge type shackles.
- Determine best floor fastening method for the new governor base bolt pattern.
- Identify the required length of governor rope.

Estimated Installation Time: Varies depending on space constraints.

- Options:**
- New 3/8 in. non-preformed governor rope p/n AAA712Q112C
 - New 3/8 in. governor wedge type rope shackles p/n AAA227E14

We at **UNITEC Parts Co.** appreciate your business. For questions, please call us at **(800) 328-7840**.