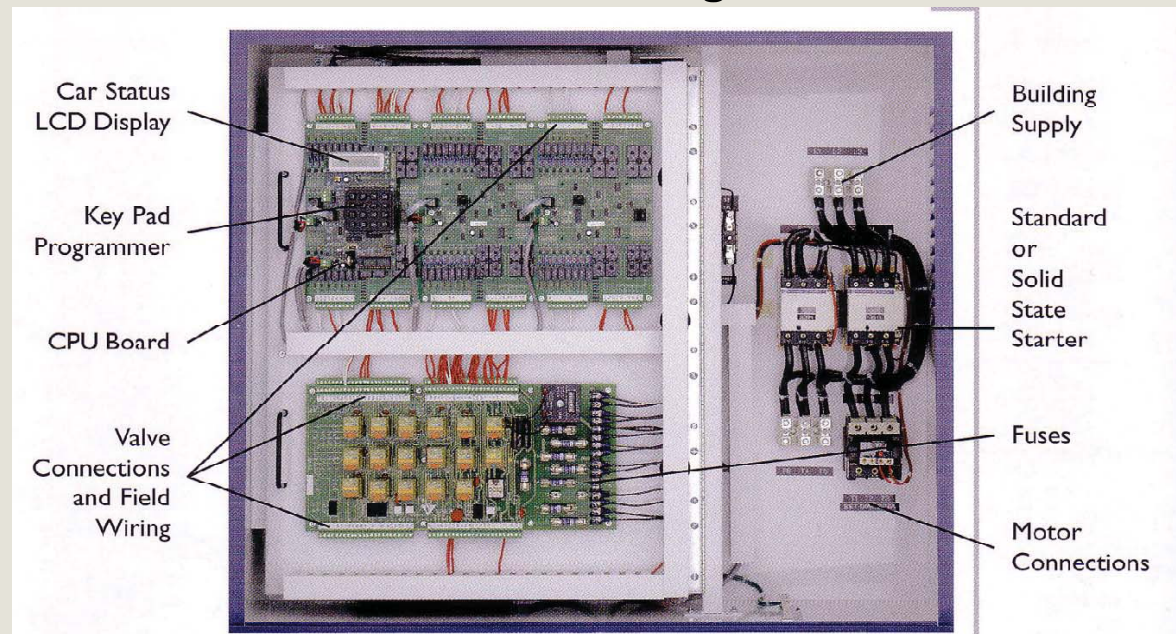


Modernization Package Controller



Configured with these popular features:

- 2-6 landings, opening in-line
- Simplex selective collective operation
- Interface with Unitec AT400 door operator
- Independent Service
- Inspection access; top & bottom
- Car call cutout provision
- Car-to-lobby operation
- Flood switch provision
- Infrared curtain unit (with nudging) provisions
- 115 VAC signal/control/valve voltages
- Passing gong circuit
- Barrier free gong
- Position Indicator Circuit (with banking option)
- Direction arrow circuit
- Car travel lantern
- All common local codes, including 2004
- Shunt trip delay operation
- Low oil switch provision
- Oil viscosity control
- Interface to Maxton or any 4-valve system
- Reverse phase monitor
- 208/230/460v-3ph-60Hz building supply
- 36"H x 36"W x 7"D NEMA 1 enclosure
- UL / cUL Labeled
- Solid state starting: 15-50HP; 208 – 480V

Complete Modernization Packages

- ❖ Controllers
 - ❖ Hydro Power Units
 - ❖ Door Operator
- and so much more

UNITEC® PARTS COMPANY

www.unitecparts.com 800-328-7840
 (05/2010) © UNITEC 2010. All rights reserved.

Unitec® is a registered trademark of Otis Elevator Corporation, Farmington, CT.